

“I want to know what’s up and coming in my industry...”
We can help.



What are the emerging trends (opportunities or threats) in my industry?

What changes exist in my industry that could impact my business and my customers either positively or negatively?

- * Technology
- * Raw materials
- * Customer demand
- * Competitive landscape

What are the market conditions or forecasts of my industry?

What are the financial benchmarks for my industry?

We can help answer these questions, no matter what industry.



What we can do for you:

Review customized excerpts from Hoovers and IBIS business intelligence reports including:

- * Industry performance
- * Industry benchmarks and statistics
- * Products and markets
- * Supply chain
- * Growth potential
- * Opportunities and threats
- * Competitive landscape
- * Trade associations

Pricing Range: \$350-\$700

Market Value: \$750-\$1,500

Special discounts apply for Envision Greater Fond du Lac investors and non-profits.

Phone: 920-921-9500
Email: info@envisiongreaterfdl.com
Website: www.envisiongreaterfdl.com

Call today to schedule a confidential meeting to discuss your research needs and receive a customized scope of work.



Empowering businesses to make smarter decisions based on data insights which reduce risk and increase competitive advantage.

4 Easy Steps

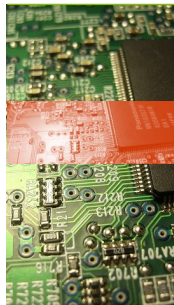
- 1) Consult with Envision Greater Fond du Lac research professionals to define research questions and objectives.
- 2) Receive a scope of work proposal outlining objectives, timeline, cost, deliverables, etc. Created by Envision Greater Fond du Lac and approved by you, the client.
- 3) Receive updates & communication as research is being conducted.
- 4) Meet with Envision Greater Fond du Lac to discuss results, recommendations and next steps.

Personalized Reports.

Data is not “one size fits all” so we don’t treat it as such. Envision Greater Fond du Lac meets with you to discuss your needs and overall goals so we can help you move forward in a way that fits you. We walk you through the data, giving you the knowledge to implement results.

Affordable!

Envision Greater Fond du Lac offers a free estimate for potential research services. We offer flexibility and convenience by providing the initial consultation at whatever location is agreeable to you. Our services come at a significantly reduced rate when compared with the typical market rate.

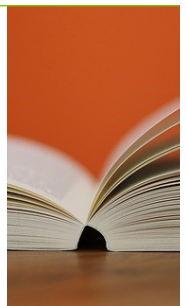


Reliable Sources.

Envision Greater Fond du Lac has access to high-powered, database subscriptions, geographic information systems (GIS), as well as other sources that produce reliable information which will empower you to make data-driven decisions.

Manageable and Usable Data.

There’s a huge amount of data out there but it’s hard to sort through it all and know what’s reliable. Envision Greater Fond du Lac is here to make data manageable and tie it into your business’s overall goals, by saving you time and valuable resources.



Call Envision Greater Fond du Lac today for your *free* BI Consultation.