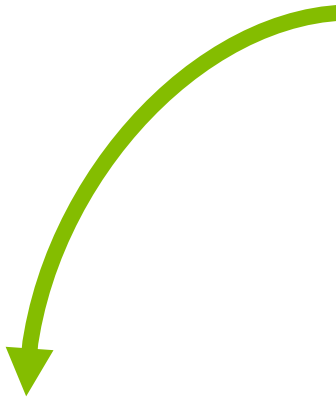


“I want to get ahead of my competitors...”

We can help.



Who are my competitors and what are they doing compared to me?

- * Size of companies
- * Revenue/employee size
- * Management profile
- * Where are they located geographically? What's the distribution of my competitors?
- * Offerings/products/services
- * Competitor pricing
- * Delivery methods/distribution
- * Supply chain

We can help answer these questions, no matter what industry.

What we can do for you:

- Evaluate the competitive landscape of a new or existing market (concentration, key success factors, barriers to entry, globalization, etc.)
- Research competitors in current or potential markets (company names, contacts, demographics, industry codes, company reports, news articles, etc.)
- Map distribution of your current competitors

Pricing Range: \$350-\$700

Market Value: \$750-\$1,500

Special discounts apply for Envision Greater Fond du Lac investors and non-profits.

Call today to schedule a confidential meeting to discuss your research needs and receive a customized scope of work.

Phone: 920-921-9500

Email: info@envisiongreaterfdl.com

Website: www.envisiongreaterfdl.com



Empowering businesses to make smarter decisions based on data insights which reduce risk and increase competitive advantage.

4 Easy Steps

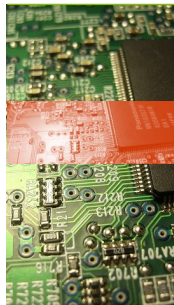
- 1) Consult with Envision Greater Fond du Lac research professionals to define research questions and objectives.
- 2) Receive a scope of work proposal outlining objectives, timeline, cost, deliverables, etc. Created by Envision Greater Fond du Lac and approved by you, the client.
- 3) Receive updates & communication as research is being conducted.
- 4) Meet with Envision Greater Fond du Lac to discuss results, recommendations and next steps.

Personalized Reports.

Data is not “one size fits all” so we don’t treat it as such. Envision Greater Fond du Lac meets with you to discuss your needs and overall goals so we can help you move forward in a way that fits you. We walk you through the data, giving you the knowledge to implement results.

Affordable!

Envision Greater Fond du Lac offers a free estimate for potential research services. We offer flexibility and convenience by providing the initial consultation at whatever location is agreeable to you. Our services come at a significantly reduced rate when compared with the typical market rate.



Reliable Sources.

Envision Greater Fond du Lac has access to high-powered, database subscriptions, geographic information systems (GIS), as well as other sources that produce reliable information which will empower you to make data-driven decisions.

Manageable and Usable Data.

There’s a huge amount of data out there but it’s hard to sort through it all and know what’s reliable. Envision Greater Fond du Lac is here to make data manageable and tie it into your business’s overall goals, by saving you time and valuable resources.



Call Envision Greater Fond du Lac today for your *free* BI Consultation.